

# **GAIN – EPRI Modeling and Simulation Workshop #2**

**Andrew Sowder**  
Principal Technical Leader  
Advanced Nuclear Technology

January 24 – 25, 2017  
Charlotte, North Carolina



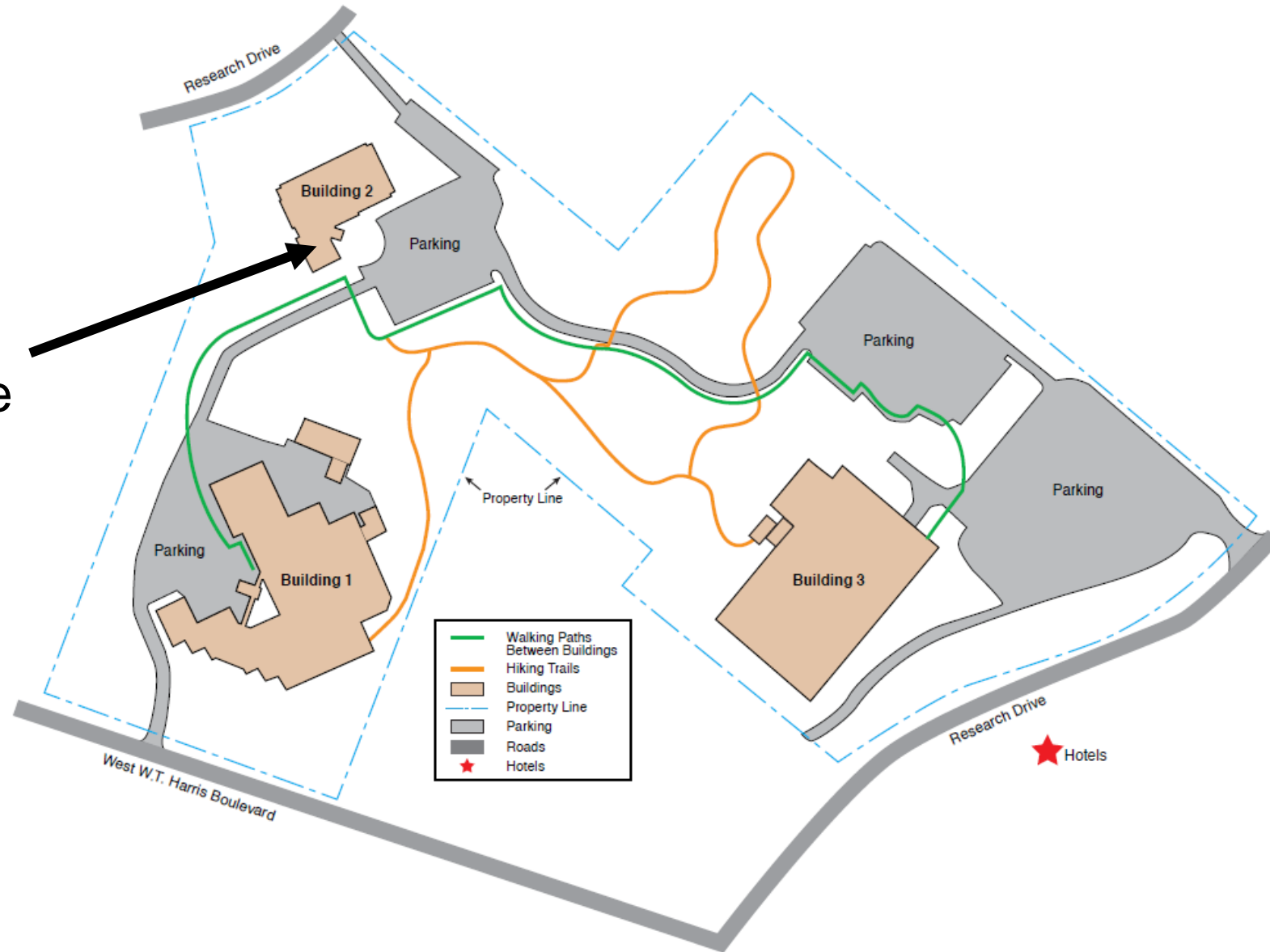
# Welcome to EPRI. Welcome to Charlotte.

- Safety
- Logistics



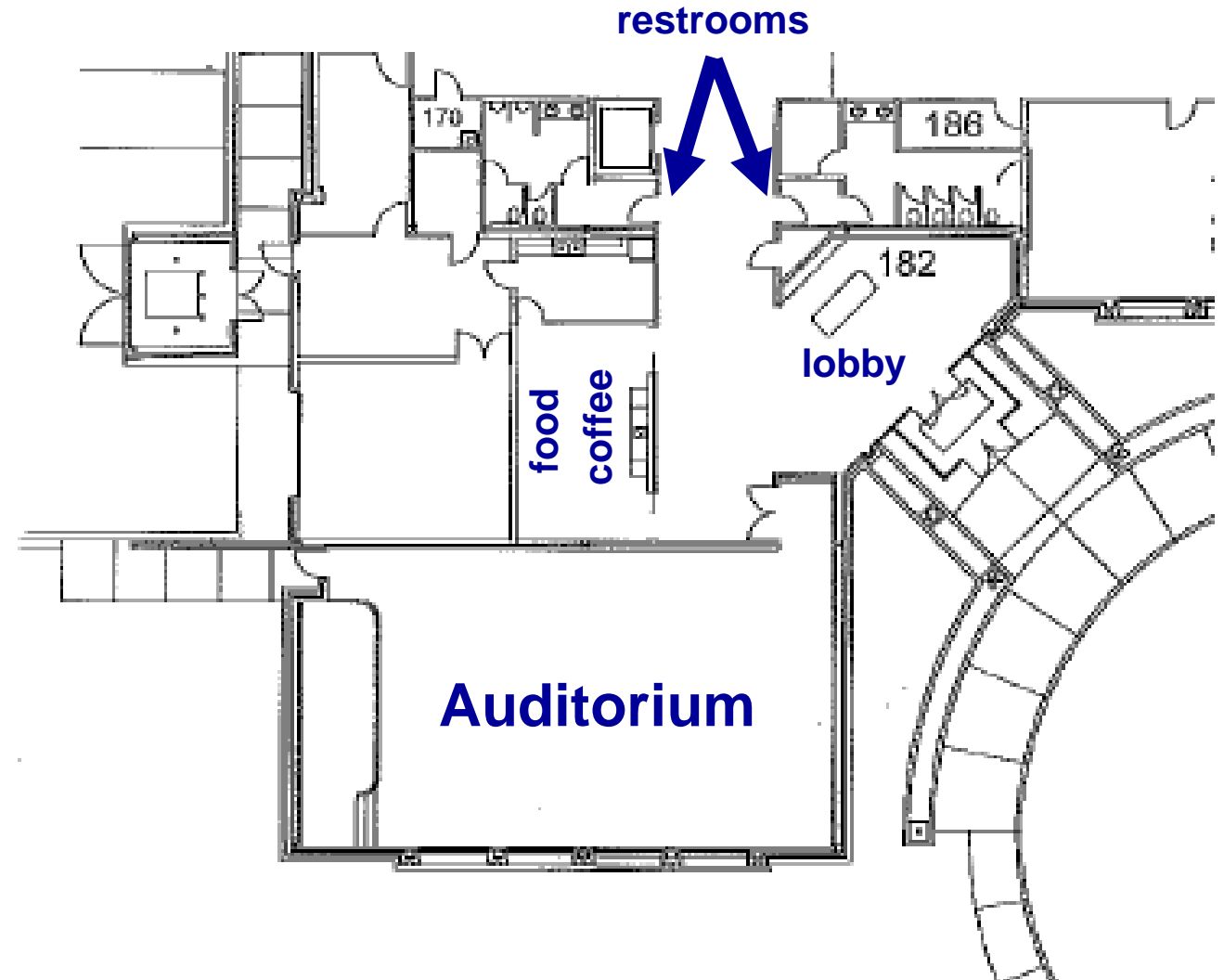
# Logistics – EPRI Charlotte Campus

you are here



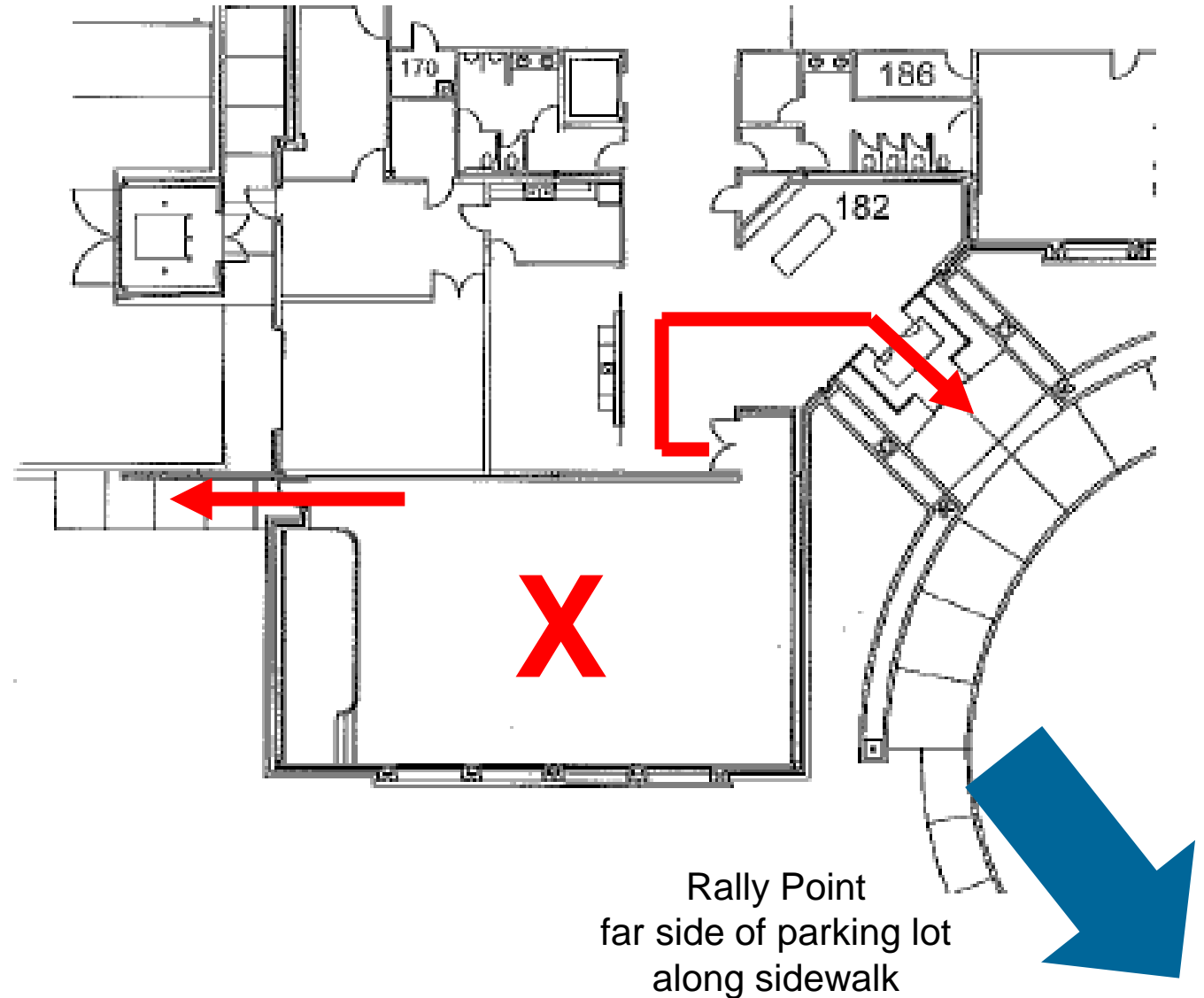
# Logistics

- Bathrooms
- Breaks
- Coffee and food
- Assistance



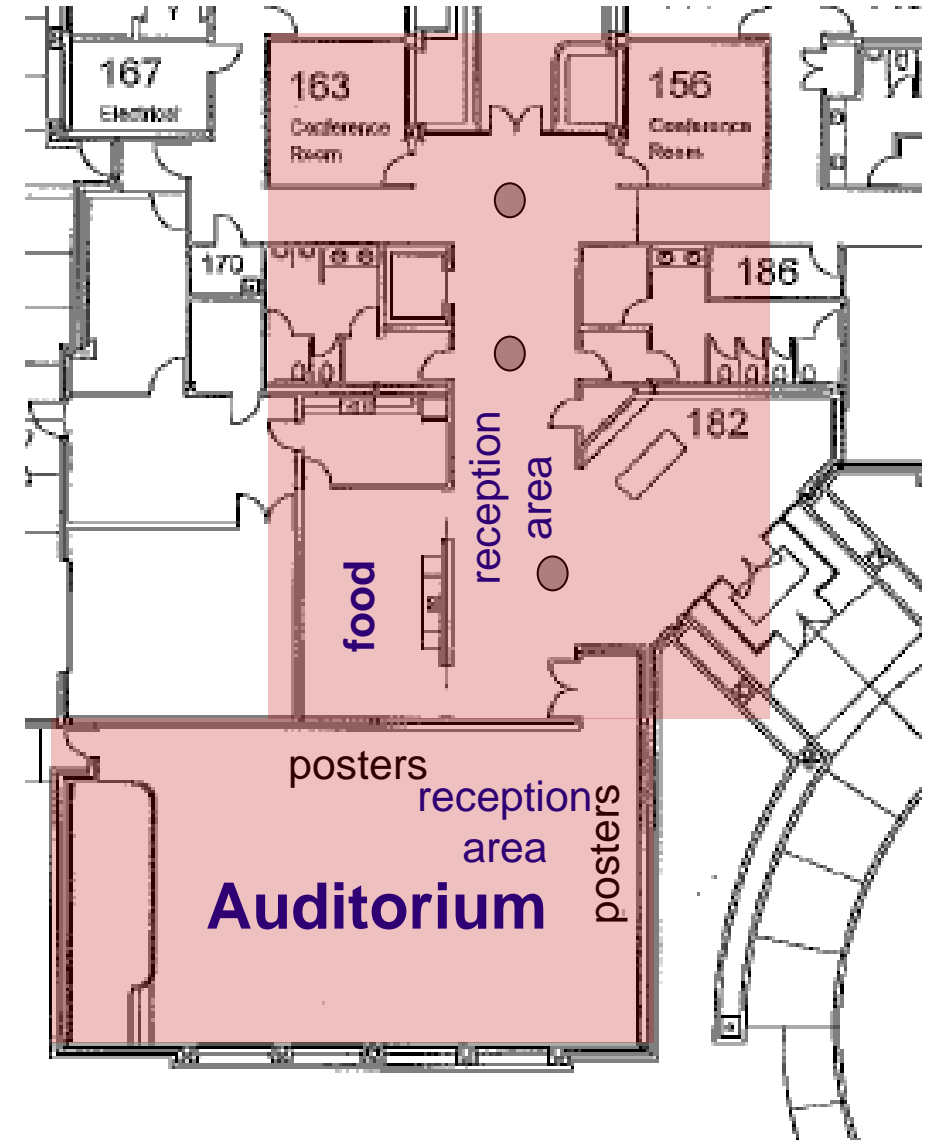
# Safety

- Be aware of environment and hazards
- In case of emergency, exit through marked emergency exit (or main lobby doors)
- Follow EPRI staff to rally point (across parking lot)



# Tuesday Night Poster Session / Reception Logistics

- 6 – 8 pm
- heavy hors d'oeuvres + beverages
- posters and demonstrations
- networking



# WiFi

- Network: EPRIGuest
- Username: cltguest117
- Password: EPRIguest2017

# Welcome from Neil Wilmshurst

EPRI Chief Nuclear Officer and Nuclear Sector Vice President  
Chair, GAIN Executive Committee